



[Home](#) > 2009 Summit

• [Rebooting Manifesto](#)

• [About Us](#)

### Summit Details

[Schedule](#)

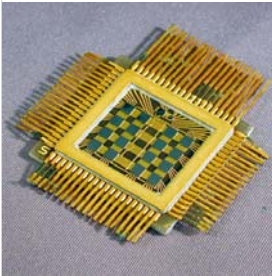
[Venue](#)

[Appreciative Inquiry](#)

[Lodging and Transportation](#)

[Local Points of Interest](#)

(Map)



Fairchild 1024-bit SAM multi-chip  
memory plane Credit: Fairchild Camera  
& Instrument Corp.  
from [The Computer History Museum](#)

## REBOOTING COMPUTING SUMMIT 2009

**Monday, January 12th through Wednesday, January 14th, 2009**  
**The Computer History Museum, Mountain View, California, USA**

Join us. We are organizing an invitational summit of 200 visionary leaders from all sectors touched by computing, including science, engineering, industry, business, education, journalism, policymaking, and government. We will inquire into the reasons each of us has been fired up about our profession and into how we can ignite similar fires in others. We will create projects and form teams that will seed, nurture, and cultivate new ideas in the community through the process of Appreciative Inquiry. We will cross international borders. We will aggressively publicize the message of the wonder of our field and the hope for the future.

### ▼ SCHEDULE

#### Monday, January 12, 2009

7:30am-8:30am	Registration/Coffee
8:30am	Doors Open
9:00am-5:00pm	Summit
5:00pm-6:30pm	Reception

#### Tuesday, January 13, 2009

8:30am	Doors Open
9:00am-5:00pm	Summit
5:00pm-6:30pm	Informal dinner with your group at a restaurant of your choice..

#### Wednesday, January 14, 2009

8:30am	Doors Open
9:00am-5:00pm	Summit

### ▼ VENUE

Computer History Museum  
1401 N Shoreline Blvd.  
Mountain View, CA 94043

[The Computer History Museum](#) is dedicated to the preservation and celebration of computing history. The museum is home to one of the largest international collections of computing artifacts in the world, encompassing computer hardware, ephemera, photographs, moving images, documents and software.

### ▼ APPRECIATIVE INQUIRY

[Appreciative Inquiry](#) is about the coevolutionary search for the best in people, their organizations, and the relevant world around them. In its broadest focus, it involves

systematic discovery of what gives “life” to a living system when it is most alive, most effective, and most constructively capable in economic, ecological, and human terms. AI involves, in a central way, the art and practice of asking questions that strengthen a system’s capacity to apprehend, anticipate, and heighten positive potential. It centrally involves the mobilization of inquiry through the crafting of the “unconditional positive question” often-involving hundreds or sometimes thousands of people. In AI the arduous task of intervention gives way to the speed of imagination and innovation; instead of negation, criticism, and spiraling diagnosis, there is discovery, dream, and design. AI seeks, fundamentally, to build a constructive union between a whole people and the massive entirety of what people talk about as past and present capacities: achievements, assets, unexplored potentials, innovations, strengths, elevated thoughts, opportunities, benchmarks, high point moments, lived values, traditions, strategic competencies, stories, expressions of wisdom, insights into the deeper corporate spirit or soul-- and visions of valued and possible futures. Taking all of these together as a gestalt, AI deliberately, in everything it does, seeks to work from accounts of this “positive change core”—and it assumes that every living system has many untapped and rich and inspiring accounts of the positive. Link the energy of this core directly to any change agenda and changes never thought possible are suddenly and democratically mobilized.

## ▼ LODGING AND TRANSPORTATION

### [Embassy Suites Santa Clara - Silicon Valley](#)

2885 Lakeside Drive, Santa Clara, California, United States 95054

Tel: 1-408-496-6400 Fax: 1-408-988-7529

[Map](#) and [Driving Directions](#)

From Airports: [San Jose](#) [San Francisco](#) [Oakland](#)

We have reserved a block of rooms at the Embassy Suites Hotel in Santa Clara at a special rate of \$179 a night. The special room rate will be available until December 12th or until the group block is sold-out, whichever comes first. Transportation will be provided between the Embassy Suites Hotel and the Computer History Museum during the Summit. To book a room at the Embassy Suites Hotel, please follow the link below: <http://www.hilton.com/en/es/groups/personalized/SNCCAES-NPG-20090111/index.jhtml>

### Directions to the Hotel

The hotel is highly visible from US 101 North or South bound. North bound US Hwy 101, exit Great America Parkway/Bowers Ave. Turn left onto Bowers Ave. and proceed to Augustine Dr. Make a right on Augustine Drive. Proceed one block, turn right onto Lakeside Drive. Hotel is on right side. South bound US Hwy. 101, exit Great America Parkway and veer right onto Bowers Ave. First stoplight, turn right on Augustine Dr. Proceed one block, turn right onto Lakeside Dr. Hotel is on right. Valley Plaza Cafe located inside hotel.

### San Jose International Airport

**Distance from the Hotel:** 4 miles

**Drive Time:** 5 minutes

**Driving Directions:** Drive North on Highway 101 to the Great America Pky/Bowers Exit. Take the Bowers exit and turn Left. Proceed to Augustine Dr and turn Right. Turn Right on Lakeside Drive - Hotel will be on the Right.

Ground Transportation from SJC

Transport	Minimum Charge
Courtesy Bus	Call Hotel for Current Rate (408-496-6400)
Taxi	25.00 USD

### San Francisco International Airport

**Distance from the Hotel:** 35 miles

**Drive Time:** 30 minutes

**Driving Directions:** South on Highway 101 to Great America Pkwy/Bowers Exit . Go right on Bowers. Proceed to first signal, Augustine Dr. turn Right. Right on Lakeside Dr. - Hotel will be on the Right.

Ground Transportation from SFO

Transport	Minimum Charge
Super Shuttle	25.00 USD
Taxi	140.00 USD

### Oakland International Airport

**Distance from the Hotel:** 36.5 miles

**Drive Time:** 41 minutes

**Driving Directions:** Take Highway 880 South towards San Jose. Take 101 N. Take the Great America/Bowers Avenue Exit. Turn Left on Great America Parkway. Turn Right onto Augustine Dr. Turn Right onto Lakeside Dr - Hotel will be on the Right.

Ground Transportation from OAK

Transport	Minimum Charge
Super Shuttle	40.00 USD
Taxi	140.00 USD

---

[Home](#) [Rebooting Manifesto](#) [About Us](#) [Summit](#)

A PROJECT SPONSORED BY



SUMMIT COOPERATION:

